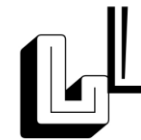


LL Design



<http://ledlife.pt/>



Design
HIGH-QUALITY
LED LAMP



LEDLIFE IS A BEAUTIFUL ATMOSPHERE LAMP.



Design
HIGH-QUALITY
LED LAMP

Reasonable interaction design, waving to open

I'm sorry, the photo can't be more real, for PS the fingerprints has driven the designer crazy...

Infrared switch

Hidden light source

mitsubishi PMMA

Customized texture and inner cover

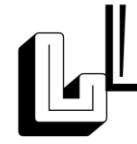
Wireless charging

Tempered glass panel

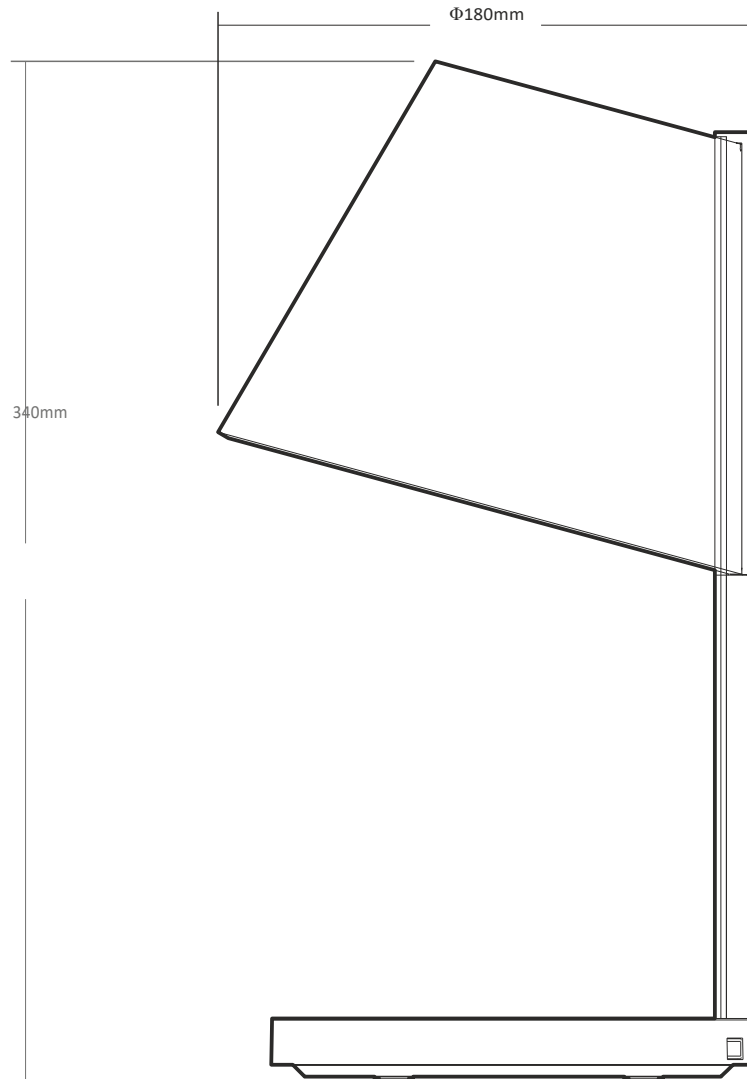
USB charging interface

Touch key





Design
HIGH - QUALITY
LED LAMP



Name: LL S1
Type: D160-W
Net Weight: 880g
Color: Black/ White
Lamp Size: 180x180x340mm(LxDxH)
Package Size: 218x218x382mm(LxDxH)

Color Temperatures: 2700K~5000K (5 steps)
Color Rendering Index: >90
Luminous Flux: 380lm
Brightness: 1%~100%(5 steps)

Power Consumption:

Adaptor: Input:100~240Vac Max1A OutPut:12VDC 2A
LED: 7W / Wireless Charger: 10W / USB: 5W

Wireless Charger:

Qi 1.2.4 EPP conformance.
Out Put: Max 9V 1A
Lamp life Span: 25,000 hours





Design
HIGH-QUALITY
LED LAMP

LEDLIFE can almost match all the scenes.



SOFA TIME



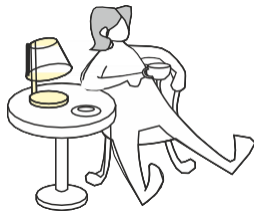
MAKE-UP



DATE TIME



SHOPPING TIME



COFFEE TIME



WORKING



SLEEPING TIME



TRAVEL TIME

